



FARONICS
POWERSAVE™

❖ Why Power Save?

Faronics Power Save dramatically reduces an organization's operating costs by eliminating unnecessary computer energy consumption. In fact, for every 1,000 computers Faronics Power Save is deployed on, organizations will save up to \$50,000 per year. Faronics Power Save keeps computers running when users need them, powers them down when they are inactive, and can prove its rapid return-on-investment through energy savings reports. Power Save is also non-disruptive—it analyzes CPU, disk, keyboard, mouse, and application status before taking power management actions.

❖ Key Features

Intelligent Configuration Settings—Definitions based on CPU, disk, keyboard, mouse and application activity ensure that energy management does not interfere with user productivity.

Flexible Scheduling—Schedule Wake-on-LAN, shutdown, or restart events.

Power Save Report—Summary and Detailed workstation utilization reporting allows you to see how much power you are saving based upon your regional electricity cost.

Customized Inactivity Definitions—Employ energy saving actions when CPU or disk activity falls below a defined level, with the option to prevent power saving actions when a particular application is running.

Audit Mode—Allows organizations to measure the potential savings they stand to gain without actually deploying Power Save in full mode.

❖ Key Benefits

- Computer energy management that is non-disruptive to IT and end-users
- Provides tangible financial savings to organizations by reducing computer power consumption
- Proves rapid return-on-investment through enterprise-wide tracking and reporting
- Strengthens IT control over network systems while promoting user productivity at all times
- Fosters feasible environmental responsibility that is easy to deploy and manage

❖ Target Markets

Facilities

Problems that Facilities personnel face:

- Pressure to stay on budget—even with increasing energy costs
- IT infrastructure is left on 24/7

Solution:

Power Save is an opportunity to reduce the strain that IT power consumption has on energy budgets. Buildings that use Power Save also enjoy lower cooling costs, since the amount of heat generated by computers and monitors is reduced, especially during evenings and weekends.

IT Departments

Problems that IT personnel face:

- Energy management capabilities provided by Windows are basic and rigid
- The Windows power settings often interfere with IT administration and workstation updates

Solution:

Power Save provides IT administrators with enterprise-wide control over workstation power status, thereby providing assurance that computers are powered on when critical updates need to be deployed, but are conserving energy during productivity downtimes.

Administration

Problems that decision makers face:

- Need ways to reduce costs without impacting productivity
- Need the ability to prove the value of investments

Solution:

Power Save's reporting capabilities are able to prove its return on investment. With energy savings of up to \$50 a year, Power Save is able to pay for itself with a few months—after that Power Save provides organizations with energy savings dividends.

FAQ's

Does Power Save have volume discounts?

No. Power Save's flat-pricing model offers everyone the same competitive pricing.

Why should I use Power Save when the Windows and Mac operating systems have built-in power saving features?

Faronics Power Save allows for granular management of the power management settings on client workstations, including the ability to specify what levels indicate inactivity on the system as well as providing exemptions based on what applications are running. This allows systems administrators to take advantage of the possible power savings on a workstation without disrupting the users day to day activities.

What operating systems does Power Save support?

Faronics Power Save supports Windows 2000, Windows XP SP2 (32-bit and 64-bit), and Windows Vista (32-bit and 64-bit).

I have Deep Freeze installed with a shutdown scheduled every day. Why would I use Power Save?

The Deep Freeze & shutdown is a limited hard shutdown that does not take into account CPU activity, disk activity or running applications. Power Save has the ability to save energy without interfering with user productivity. If a machine that had been scheduled to shutdown by Deep Freeze was either restarted or had the shutdown cancelled, the machine would remain powered on until the next scheduled shutdown event (unless the user remembered to manually shut the machine down). Power Save prevents this by intelligently shutting the machine down based on specified inactivity definitions instead of relying solely on a scheduled time.

What if I have Windows Updates or other application updates scheduled to run on workstations with Power Save installations?

Ideally you would have updates set to run during times when the PC is not being used such as late at night or early in the morning. If your computers have hardware that allow Wake-On-LAN to function, you can schedule a Wake-On-LAN action from the Power Save Console a few minutes before the updates take place. Power Save will not shut the workstation down as long as the Client Configuration is set on the Definitions Tab to include both Disk Utilization and CPU Utilization.

If your computers do not support Wake-On-LAN then it would be sufficient to allow the updates to run with Power Save configured to include both Disk and CPU Utilization as criteria to determine that the workstation is active while the updates are running.

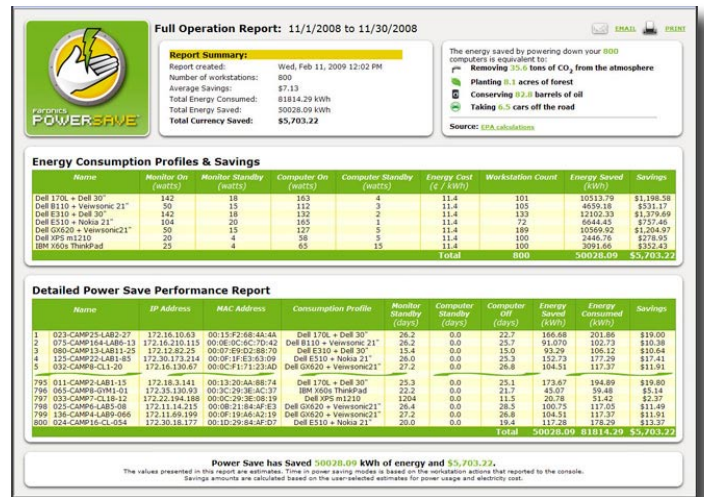
What is Audit mode?

Power Save's Audit mode provides a baseline measure of the energy being consumed, making it easy to determine the true value of the savings generated when Power Save's features are enabled. By selecting "Run in Audit Only mode" in the Power Save configuration, Power Save will behave as if it is active on the workstations. You can generate an "Audit Report" for a specified period that shows the energy and monetary savings that could have been gained. The Audit reports are also used for measurement and verification purposes and to take advantage of rebates offered by utility companies.

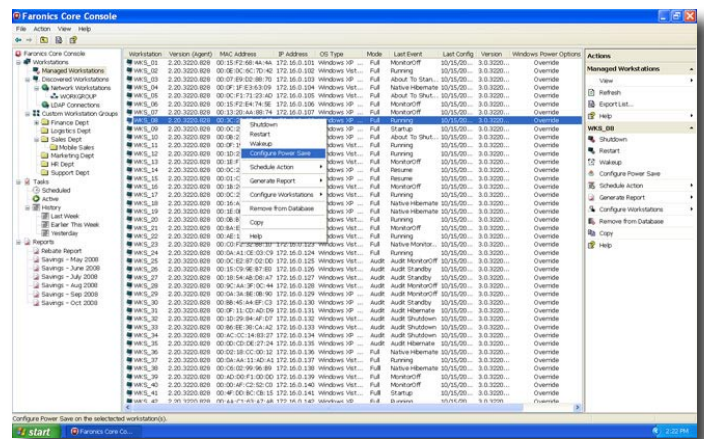
Can Power Save override the default Windows power settings?

Yes. Power Save provides the ability to override the Windows operating system power options to avoid conflicting power policies. This option is useful for environments in which centralized control of workstation energy management is desired.

Screenshots



Generate energy savings reports that show your dollar savings.



Use Faronics Core Console to manage your enterprise deployment.